

EUROPEAN COMMISSION SEVENTH FRAMEWORK COOPERATION WORK PROGRAMME

Innovative design and operation of new or upgraded efficient
urban transport interchanges

THEME [SST.2012.3.1-2.]

Collaborative project
Grant agreement no: 314262

Project full title: "City-Hub"
Project acronym: **City-HUB**

City-HUB Project



DELIVERABLE: D8.1

DELIVERABLE TITLE: Dissemination Plan

DOCUMENT CONTROL SHEET

Project no.:	314262	Acronym	City-HUB
Project Title	City-Hub		
Work Package	WP8	Title:	Dissemination and Fora
Deliverable no.:	D8.1	Title:	Dissemination plan
Version	01	Revision	01
Issue Date	31-Oct-2012		
Dissemination Level	Public		
Future references	Nathanail, E., Adamos, G. & Tsami, M., 2012. Dissemination Plan. Deliverable D8.1, City-HUB Project.		
Author(s)	Eftihia Nathanail, Giannis Adamos & Maria Tsami		
Co-author(s)	-		
Responsible Organisation	CERTH		
WP Leader	CERTH		
Internal Reviewer(s)	All partners		
Project Officer	Natascia Lai		

City-HUB consortium	
UNIVERSIDAD POLITECNICA DE MADRID (UPM-TRANSyT)	Spain
KTI KOZLEKEDESTUDOMANYI INTEZET NONPROFIT KFT (KTI)	Hungary
TRANSPORTOKONOMISK INSTITUTT (TOI)	Norway
CENTRE FOR RESEARCH AND TECHNOLOGY HELLAS (CERTH)	Greece
PANTEIA BV (NEA)	The Netherlands
TRL LIMITED (TRL)	United Kingdom
TEKNOLOGIAN TUTKIMUSKESKUS VTT (VTT)	Finland
INSTITUT FRANCAIS DES SCIENCES ET TECHNOLOGIES DES TRANSPORTS, DE L'AMENAGEMENT ET DES RESEAUX (IFSTTAR)	France
CENTRUM DOPRAVNIHO VYZKUMU v.v.i. (CDV)	Czech Republic

City-HUB Dissemination Plan

INDEX

1 Introduction	8
1.1 Project overview and workplan	8
1.2 Management of the dissemination plan	9
2 City-HUB stakeholders and potential users	10
2.1 Expert reference group	10
2.2 Case study reference group	11
2.3 Stakeholders' advisory group	11
2.4 Potential users.....	12
3 Dissemination strategy	14
3.1 Graphic project identity	14
3.1.1 Logo	14
3.1.2 Document templates.....	14
3.2 Dissemination tools	15
3.2.1 Website (www.cityhub-project.eu)	15
3.2.2 Project presentation.....	16
3.2.3 Newsletters.....	16
3.2.4 Press releases.....	17
3.2.5 Leaflet	18
3.2.6 Poster	18
3.2.7 Social networking	18
3.2.8 Quick responses (QR) codes.....	18
3.2.9 Fact sheets.....	18

3.2.10 Use of existing international forums for transport planning.....	19
3.2.11 Publications	19
3.3 Dissemination actions/activities	22
3.3.1 Stakeholder Conferences	22
3.3.2 Stakeholder Workshops.....	22
3.3.3 Transport Vision Events.....	22
3.3.4 Special Events.....	22
3.3.5 Fora.....	23
3.3.6 Participation at External Conferences/Workshops	23
3.3.7 Final Conference	24
3.3.8 Cooperation and synergies with other projects	25
4 Foreground and exploitation	28
4.1 Management of foreground and intellectual property rights	28
4.2 Exploitable outcomes	28
5 Impact monitoring system.....	31
5.1 Visits and downloads in the website	31
5.2 Number of participants at project's events	31
5.3 Number of publications.....	31
6 Summary of dissemination tasks/activities and timetable	32
7 Literature	36
8 Annexes	37
8.1 Annex A: Indicative list of potential users.....	38
8.2 Annex B: List of dissemination users	40
8.3 Annex C: List of publications	41
8.4 Form of intent for submission of papers.....	42

LIST OF TABLES

Table 1: Expert reference group	10
Table 2: Case study reference group.....	11
Table 3: Stakeholder Advisory Group	12
Table 4: Potential users.....	13
Table 5: List of international journals and reviews	21
Table 6: List of international conferences	24
Table 7: List of related European ongoing and completed projects.....	26
Table 8: Indicative list of potential exploitation opportunities.....	29
Table 9: Exploitable outcomes.....	29
Table 10: Dissemination tasks/activities list	33
Table 11: Timetable of dissemination tasks/activities and exploitable results	34
Table 12: Indicative list of potential users	38
Table 13: List of dissemination activities.....	40
Table 14: List of publications	41
Table 15: Form of intent for submission of papers	42

LIST OF FIGURES

Figure 1: City-HUB logo.....	14
Figure 2: Presentation template.....	15
Figure 3: Draft front page of the website.....	16
Figure 4: Newsletter template.....	17

LIST OF ABBREVIATIONS

Abbreviation	Description
D	Deliverable
DoW	Description of Work
EC	European Commission
EU	European Union
GA	Grant Agreement
ICT	Information and Communications Technologies
ITS	Intelligent Transport Systems
M	Month
PO	Project Officer
QR	Quick Response
WP	Work Package

ABSTRACT

This deliverable is the City-HUB dissemination plan. It documents the dissemination strategy that has been developed and outlines the main dissemination activities and events that are planned during the project's lifecycle, as well as how the main materials will be presented and made available for the widest possible dissemination of the project's results.

The plan considers issues such as the definition of the project's outcomes that will be disseminated and/or exploited, the target audience, the timing, the communication types and the media channels, presented in a timetable, and accompanied by relevant templates, lists and forms (e.g. lists of publications, lists of conferences, etc.) where necessary.

1 Introduction

This document is the first version of the City-HUB dissemination plan. It outlines the main dissemination activities and events that are planned during the project implementation, as well as the materials that will be produced for the widest possible dissemination of the project's results.

The dissemination plan is the first public deliverable of the project, and as well as being a guideline for the dissemination of the project activities, it is also a supporting tool for the consortium members, including, for example guidelines on how partners can identify opportunities for the promotion of the project's outcomes and how to prepare project documents, e.g. presentations, press releases, etc.

1.1 Project overview and workplan

City-HUB brings together leading experts in the fields of design and urban integration, transport operation and business, with local and regional authorities and end-users organisations that represent the economic, demographic and territorial diversity of Europe.

The project's research objectives are to:

- Review state-of-the-art urban and interurban interchanges and gain important learning on measures of success that can be replicated across Europe and beyond.
- Provide a fully informed comprehensive framework and typography of interchanges on a number of selected case studies, establish methodological guidelines and an implementation framework to be used in the case studies' validation, and, lastly, develop and apply the City-HUB model on specific (validation) case studies.
- Develop a communication plan to fully exploit and disseminate the findings, results and innovative aspects of the project, through an extensive implementation programme and awareness-raising initiatives and outreach to the main target groups.
- Manage the City-HUB project in an effective and efficient manner.

The workplan of the project is formed in eight Work Packages (WPs), which are briefly presented below:

- **WP1 – Administrative Management:** supervision of the project's operations and progress, and establishment of the channels of communication between the consortium and the European Commission.
- **WP2 – Setting the Scene:** state-of-the-art review and synthesis of existing literature about policy objectives and approaches regarding accessible urban multi-modal transport systems, assessment of current theory and policy based on the findings from the pilot studies, and provision of recommendations for future EU-level policy and local practice.

- **WP3 – Efficient and Smart Design:** design of transport interchanges, aiming at the identification and definition of best practices in issues, such as, connectivity among transport modes, information systems, building elements, distribution of facilities and services, potential methodologies for quantifying carbon emissions from construction, energy efficient building design and operation, and guidelines to help better understand peoples' needs
- **WP4 – Integrated Management:** analysis of the organization of interchanges in terms of operational functionality, management, practicalities, services and efficiency in place, and elaboration of operational, management and business models, which, taking into account energy efficiency, carbon footprint and impacts of local economy, can be established for the support of interconnectivity.
- **WP5 – City-HUB Model:** development of the City-HUB model, which will consider sensible issues related to energy, operation costs, urban land use and transport systems integration, and proposal of innovative instruments and definition of guidelines for the improvement of urban interchanges.
- **WP6 – Validation through Case Studies:** validation of the effective and smart design solutions (WP3) and the integrated management solutions (WP5) on six selected case studies, and introduction of case-validated solutions that will be utilised for the development and validation of the City-HUB model in WP5.
- **WP7 – Stakeholder Involvement and European Transferability:** facilitation of the involvement of stakeholders in the process of producing design, planning and management guidelines in WPs 3 and 4, creating the City-HUB model in WP5 and evaluating the case studies in WP6, and elaboration of an efficient way of enhancing public participation in the interchange planning process.
- **WP8 – Dissemination and Fora:** dissemination of the project's results to the research community and relevant stakeholders (e.g. local and regional authorities, transport operators, end-users' organizations, etc.), and organization of fora on new and innovative technologies, related policies, etc.

1.2 Management of the dissemination plan

CERTH, as the dissemination manager of City-HUB (WP8 Leader) is responsible for preparing the dissemination plan, and for monitoring the activities related to publicizing the project's progress and findings.

At the same time, WP Leaders will be responsible for informing the WP8 Leader about their intentions to proceed with a dissemination action (e.g. publication, participation at a conference, etc.), in order to enable the updating of the monitoring system that will be established to assess the impact of the project.

2 City-HUB stakeholders and potential users

The City-HUB consortium involves several stakeholders and experts in the project, in order to ensure their support, experience, expertise and other points of view. For the achievement of this aim, three discrete groups of stakeholders have been created, these being:

- **An expert reference group**
- **A case study reference group**
- **A stakeholders' advisory group**

These stakeholders, as well as contributing to the project in terms of the technical improvement of the deliverables, reports, etc., will also provide a link between the consortium and the wider audience of stakeholders to whom the results need to be disseminated.

These stakeholders and the wider population of potential users constitute the “beneficiaries” of the project, who are further described in the following paragraphs.

2.1 Expert reference group

The first group of stakeholders refers to the expert reference group, through which the consortium will obtain expert advice on issues such as the design and management of terminals, planning and operational aspects, business models, as well as issues that directly affect particular users (people with disabilities, cyclists, etc.). This group consists of six experts, whose profiles are presented in Table 1.

Table 1: Expert reference group

Name	Contact partner	Expertise	Organisation
Antonio Gonzalez	UPM	Design and urban integration	Directeur Equipe Dynamiques Territoriales/ Agence d'Urbanisme Bordeaux métropole Aquitaine (Urban Planning Authority)
H.L.M. Heesmans	Panteia/NEA	Regional authorities	Regio Utrecht
Prof. Markos Papageorgiou	CERTH	ICT tools	University of Crete
Antonin Machacek	CDV	Transport operators	Association of transport companies CZ
Erzsébet Földesi	KTI	User organisations	Hungarian National Federation of Disabled Persons' Associations (MEOSZ)
Lluis Alegre	UPM	Local economy and terminal operation	Head of Mobility of Barcelona Transport Authority

2.2 Case study reference group

The second group of stakeholders includes representatives of the case studies that will be investigated within the framework of the project. Their contribution will cover the more practical side of the intermodal interchange terminals, in terms of identifying specific problems, defining potential interventions and providing solutions for their improvement. For each of the eleven case studies, at least one stakeholder will be involved in the project, as shown in Table 2.

Table 2: Case study reference group

Case study	Contact partner	Organisation	Contact person(s)
Moncloa Interchange (Madrid)	UPM	Consortio Regional de Transportes de Madrid ALSA (Transport Operator)	Javier Aldecoa Rafael Gonzalez
Iford Railway Station (London)	TRL	Transport for London (Transport Authority)	Spencer Clark
New Railway St. Thessaloniki	CERTH	OASTH (Organization of Urban Transportation of Thessaloniki)	Georgios Spanos
		Greek Ministry of Infrastructure, Transport and Networks	Eleni Zacharaki
Kamppi (Helsinki)	VTT	Helsinki Region Transport (HSL)	Kerkko Vanhanen Veera Laine
Erd Station, Budaors	KTI	Budaörs Regional Municipal Association	Farkas Somogyi
Cornella Centre	UPM	ATM Barcelona (Transport Authority)	Xavier Rosello
Prague terminus Dejvicka	CDV	DPP (Transport Authority)	Jan Barchanek
Utrecht Centraal	Panteia/NEA	Regio Utrecht (Transport Authority)	Heleen van Keulen
Gare Lille Flandres/Europe	IFSTTAR	Lille Metropole Urban Community	Thierry Du Crest
Oslo Vaterland	TOI	Akershus county (regional authorities)	Tom Granquist
		Akershus kollektivterminaler (public terminal operating company)	Knut Bergersen
Budaors Interchanges	KTI	Budaörs Regional Municipal Association	Farkas Somogyi

2.3 Stakeholders' advisory group

The stakeholders' advisory group brings together European and national organisations that are involved in the planning, design, operation and use of interchanges. Stakeholders from six such organisations, as shown in Table 3, constitute the advisory group.

Table 3: Stakeholder Advisory Group

Contact partner	Organisation	Contact person
KTI	European Disability Forum	Erzsébet Földesi
UPM	Mobility Department (Regional Government of Galicia)	Miguel Rodriguez
UPM	European Metropolitan Transport Authorities (EMTA)	Sabine Avril
UPM	ECTRI (European Conference of Transport Research Institutes)	Caroline Almeras
UPM	Civinet (Civitas Spain and Portugal Network)	Jose Maria Diez
TRL	Passenger Focus (United Kingdom)	Ian Wright

2.4 Potential users

The consortium has identified four categories of potential users, these being:

- **Transport and terminal operators**
- **Transport policy makers and influencers**
- **Academic and research authorities, planning and design companies**
- **General public / demand side users**

The potential interests of the above users, the expected benefits and impacts to them as a result of the project, as well as the dissemination means that will be used to engage them are presented in Table 4.

In addition, specific beneficiaries for each of the above categories have been identified by the consortium, and will be added to the stakeholder database, which will be produced within WP7. An initial list of these beneficiaries is presented in the Annex A of this deliverable (Table 12).

Table 4: Potential users

Category of beneficiaries	Potential interests	Expected benefits and impact	Means of dissemination
Transport & terminal operators	In adopting innovative approaches for the design of interchange terminals, using ICT tools, developing strategies for the integration of land use planning, and applying flexible management and business models	Increased complementarity among different modes of transport, integration of the coordination between modes and operations, improvement of public transport, promotion of sustainable transportation	Study on pilot interchange cases, implementation of case studies, workshops and fora, involvement of members of the consortium in undertaking study tours of terminals for the transfer of knowledge
Transport policy makers and influencers	In guidelines for the provision of information to travellers (including ICT tools), development of innovative approaches for the design of efficient interchanges and their implementation framework, integration of a coherent framework regarding all involved stakeholders	Solutions of intermodality, improvement of public transport, development of energy efficient urban network performance, increased economic viability, development of cost-efficient interchanges, creation of a business case that stimulates the local economy	Pilot and implementation case studies, relevant policies as part of the project's reports or deliverables
Academic and research communities, planning and design companies	In almost all categories or types of the project's results, with a special focus on the design innovations of interchanges, the provision of information to travellers and the development of management and business models	Increased knowledge of the innovative approaches of the project as regards the design or new or the upgrade of existing transport interchanges through the case studies that will be investigated in the project	Publications in journals, conference proceedings, website, final conference, workshops, fora
General public/demand side users	In the development of advantageous transportation in terms of timing, safety, cost, comfort, etc.	Provision of information for their better daily transportation, of the improvement and modernization of interchange terminals	Website, local stakeholder workshops, fora

3 Dissemination strategy

The scope of the City-HUB dissemination strategy is the development of a framework aimed at raising public awareness of the project and disseminating the findings, results, and innovative issues that will be developed during the project's lifetime. The strategy, also, notably considers the main target groups of the project, and the effective development of initiatives on how to reach them.

The definition of the project's outcomes that will be disseminated, the target audience, the timing, the communication types and the media channels are the main components of the dissemination strategy, which is presented in the following paragraphs.

3.1 Graphic project identity

3.1.1 Logo

A City-HUB logo (Figure 1) has been produced and will be used in the design and development of the website, the production of the project's leaflet, poster and newsletters, and any other project documents, e.g. deliverables, press releases, etc.



Figure 1: City-HUB logo

3.1.2 Document templates

In order to ensure consistency when preparing project documents (e.g. deliverables, presentations etc.) structured templates have been produced, including:

- A deliverable template
- A newsletter template
- A presentation template
- A fact sheet template

The presentation template is shown as an example in Figure 2.

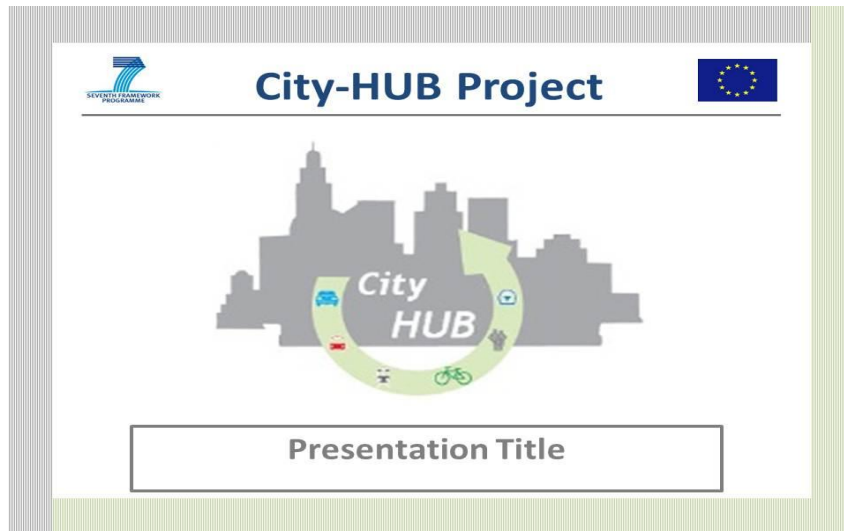


Figure 2: Presentation template

3.2 Dissemination tools

3.2.1 Website (www.cityhub-project.eu)

The main dissemination tool is the project website, which will be the source of information for any interested parties. They will be able to obtain information about the progress of the project, as well as the published deliverables and reports. In addition, a “members’ area” with restricted access will hold shared databases enabling the effective cooperation between the consortium partners, and between the consortium and stakeholders. The website will give particular attention to the presentation of the case studies that are under investigation as part of the project, the provision of the relevant information to the visitors of the website and the monitoring of the results of the implementation and evaluation of the City-HUB model against the validation case studies. All dissemination materials will be available for download.

The website, as presented in a first draft version in Figure 3, is divided into three sections. The first section provides information on the project, including a description of the objectives, the workplan, the expected deliverables and the consortium. The second section includes an “interactive agenda” providing information about forthcoming events and activities. The third section is the restricted “members’ area” that will be developed for the partners, and stakeholders (with variable access rights). The contents of the members’ area will include a calendar with deadlines for the deliverables, project documents (e.g. minutes of meetings, draft versions of deliverables, relevant review forms, etc.), events (e.g. management committee and technical project meetings) and other material, such as databases, communications, confidential documents etc.

The website will be hosted and maintained by WP8 Leader, CERTH, which will also be responsible for its design and development. A three-year maintenance programme beyond the end of the project is foreseen.

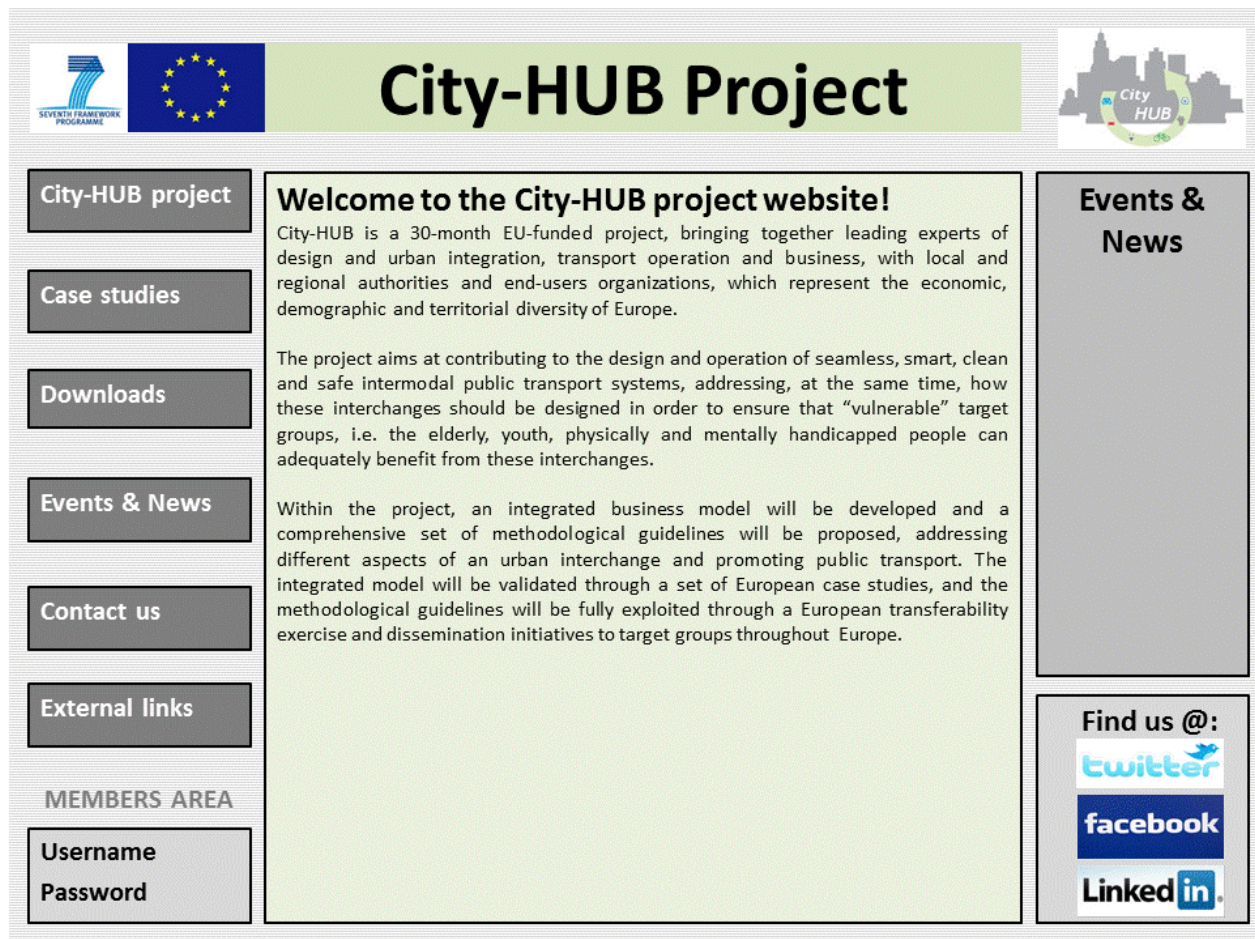


Figure 3: Draft front page of the website

3.2.2 Project presentation

Based on the presentation template (Figure 2), City-HUB presentations will be prepared in a powerpoint format for the promotion of the project in workshops, meetings or other events. The presentations, including the goals and objectives of the project, the workplan, the deliverables, the expected and actual outcomes, the consortium, potential beneficiaries and contact details, will also be uploaded to the City-HUB website.

3.2.3 Newsletters

A yearly electronic newsletter (three in total throughout the duration of the project) will be published and distributed. This will provide an update on the project progress, including the mid-term and final results. The newsletter will be available for download from the website, and will, also, be sent by mail to the stakeholders on the stakeholders' database that will be developed in WP7.

A draft template for the newsletter has been prepared (Figure 4), and all partners will be asked to collaborate in the preparation of the newsletters, giving their feedback as each WP progresses.



Figure 4: Newsletter template

3.2.4 Press releases

Press releases will be prepared and distributed by each partner (at a local level) at specific milestones of the project, e.g. in the beginning of the project and before and after a stakeholder workshop, etc. The WP8 Leader will be responsible for the preparation of the English version of the press release, and, then, each partner will translate it to the local language, and distribute it in local press (magazines, newspapers, etc.). This material will also be available on the website.

3.2.5 Leaflet

An electronic leaflet will be produced by WP8 leader, as part of the dissemination materials. The leaflet, which will be available for downloading from the website, will provide information about the project's goals and objectives, the workplan, the case studies, the partners, and contact details. Also, it is foreseen that the leaflet will be distributed by mail to all stakeholders and potential beneficiaries.

3.2.6 Poster

The preparation of a poster is under consideration, and based on the available budget, copies will be distributed among the potential beneficiary organisations, and will also be shown at each project event, e.g. stakeholder workshops, the final conference, etc.

3.2.7 Social networking

Promotion of the project through social networking is also planned, and this includes the development of accounts in "Twitter", "Facebook" and "LinkedIn". The effectiveness of these media channels will be actively considered as the project progresses, with their impact being assessed, to allow for any necessary improvements or alterations.

3.2.8 Quick responses (QR) codes

QR (Quick Responses) codes will be generated, allowing smartphone users to access information from the City-HUB website, e.g. links describing the case studies, or links with the project contact details.

3.2.9 Fact sheets

A number of fact sheets will also be produced by City-HUB, aimed at documenting in 1-2 pages the main findings for each case study investigated (both pilot and validation), as well as addressing specific issues that the project studies, such as:

- Smart design
- ICT
- Accessibility
- Soft mode integration

In addition, since the issues above are the topics of the transport vision events that will be organised during the project under WP7, the production of the specific fact sheets will work as a follow-up of the specific events summarising the main findings.

3.2.10 Use of existing international forums for transport planning

Existing international forums that focus on transport planning will, also, be used as a “tool” for disseminating the project’s outcomes. The project’s website will be firstly suggested as a link to these forums and will then provide them with the latest news and dissemination materials. In addition, cooperation will be pursued by the exchange of points of view addressing common research fields. An interactive presentation of any collaborative actions with the international forums will be provided under the “News and events” section of the City-HUB website.

An initial list of such forums follows:

- ELTIS: The urban mobility portal (<http://www.eltis.org/>)
- EPOMM: European platform on mobility management (<http://www.epomm.eu/>)
- Sustainable mobility plans (<http://www.mobilityplans.eu/>)
- Low emission zones (<http://www.lowemissionzones.eu/>)
- Transport research and innovation portal (<http://www.transport-research.info/web/>)
- POLIS: European cities and regions networking for innovative transport solutions (<http://www.polis-online.org/>)
- UITP: International Association of public transport (<http://www.uitp.org/>)

3.2.11 Publications

Based on the mid-term and final results of the project the consortium members will prepare scientific journal articles, and submit them to scientific magazines, or present them to international, European, and national conferences, as well as to regional or local workshops. The specific activity, thus the preparation of publications that are related to City-HUB, has to be subject to the Article II.30.3 of the EC-GA.

IFSTTAR will lead the committee that will coordinate the publication process. The dissemination managers and WP Leaders will participate in the committee.

Each partner who intends to prepare an article/presentation at a conference will submit to the committee a form of intent, in order to get “approval”. In this way, both the monitoring of the submitted papers/conference presentations and the avoidance of overlaps or conflicts, are ensured. It should be noted that, according to the Article II.30.3 of the EC-GA, and as agreed in the City-HUB Consortium Agreement, each partner should give prior notice of any planned publication to the consortium at least 45 days before the submission. In the case of any objection to the decision, this should be made in accordance with the GA in writing to the Coordinator and to any partner concerned, 30 days after receipt of the notice.

The form of intent that partners will have to complete before the submission of a paper, will comprise the following:

- The names of the authors-participants in City-HUB and the names of other authors outside the consortium (if any)
- The name of the partner of City-HUB and the names of other institutes/organisations

outside the consortium (in any)

- The name of the journal or conference that the authors intend to submit or present a paper, respectively, and the place and timing, in case of conferences
- The title of the paper
- The abstract
- A brief note addressing the results issued and provided from City-HUB research indicating the relevant WP(s).

A copy of the form of intent is presented in Annex D (Table 15).

Each partner will be responsible for sending the final papers submitted and/or the presentations made at conferences or workshops, to IFSTTAR, who will be responsible to storing them in a database. This database will be uploaded into the members' area of the website to allow all partners to access the work. In addition, following publication, each partner is also required to inform the consortium by completing Table 14 in Annex D and submitting this to IFFSTAR.

In addition, in each publication based on the research or the results of the City-HUB project, a reference should be made in the text, e.g. in the "Acknowledgements" section. An example is given below:

"This paper is based on the research and work that has been conducted in the framework of the City-HUB project, which is co-funded by the European Commission within the 7th Framework Programme. The authors would like to thank both the consortium of the project and the European Commission."

A potential list of scientific journals is presented in Table 5. This list will be uploaded onto the members' area of the website and will be updated as the project progresses.

Table 5: List of international journals and reviews

International journals and reviews	
Cahiers Scientifiques du Transports	Journal of Urban Planning and Development
European Journal of Transport & Infrastructure Research	Papers In Regional Science
European Planning studies	Politiques et Management Public
European Transport	Public Transport International
European Transport Research Review	Recherche Transport Sécurité
European Urban and Regional Studies	Regional Science and Urban Economics
Geojournal	Regional studies
IET Intelligent Transport Systems	Revue d'Économie Régionale et Urbaine
International Journal of Sustainable Development and Planning	Transport Policy
International Journal of Sustainable Transportation	Transport Review
International of Transport Economics	Transportation
ITE Journal	Transportation Letters: The International Journal of Transportation Research
ITS Journal	Transportation Planning and Technology
Journal of Advanced Transportation	Transportation Research A (Policy & Practice)
Journal of Environmental Planning and Management	Transportation Research B (Methodology)
Journal of Public Transportation	Transportation Research C Emerging Technologies
Journal of the Transportation Research Forum	Transportation Research D (Transport & Environment)
Journal of Transport and Land Use	Transportation Science
Journal of Transport Economics and Policy	Railway Gazette international
Journal of Transport Geography	Urban studies
Journal of Urban Economics	

3.3 Dissemination actions/activities

3.3.1 Stakeholder Conferences

The results of the different stages of the research and best practices identified will be presented to stakeholders at three stakeholder conferences that will be organised together with the stakeholder workshops. These are scheduled in February 2013 in Budapest, in November 2013 in Helsinki and in November 2014 (location to be announced).

3.3.2 Stakeholder Workshops

As mentioned in 3.3.1, the stakeholder workshops will be organised together with the stakeholder conferences. The first workshop will help to identify the key factors at the end of WP2. The second workshop will seek to test the preliminary findings based on the results of WP3 and WP4, and, lastly, the third workshop will validate the City-HUB model before it is finalised in a manual that will be developed in WP5.

3.3.3 Transport Vision Events

The scope of the transport vision events is to combine several engagement techniques and help stakeholders to formulate and express their expectations of the project. The procedure that is planned to be followed in these events foresees the presentation of planning or design exercises to stakeholders based on an existing or invented problem, the provision of ideas by the stakeholders during the brainstorming session, the documentation of these ideas to concrete planning and design elements, and, by the end of the event, the proposal of a mutually agreed solution to the problem. Four such events are planned to take place, addressing:

- Smart design, e.g. redesign pilot study locations to achieve better compliance with stakeholders' expectations
- ICT, e.g. investigate the role of ICT by assessing difference scenarios
- Accessibility, e.g. suggest ideas to make an existing hub accessible
- Soft mode integration, e.g. draw up different scenarios for soft mode integration of an existing interchange

The organisation of the transport vision events is under the scope of WP7 and are planned to take place in February 2013 in Budapest, during the first stakeholder workshop.

3.3.4 Special Events

Thematic events will be organised in order to promote the special needs of disabled people and the elderly. Events may include:

- Smart solutions for accessible hubs for disabled people

- Visualisation of available facilities and means to serve special mobility needs for those interested
- Smart maps, information and prints for disabled and elderly commuters
- Presentation of existing city hubs' advanced services for reduced mobility people

The organisation of the special events is the responsibility of WP7, and it likely that they will be linked to the transport vision events and/or stakeholder workshops.

3.3.5 Fora

Fora will be organised in cooperation with WP7, in two areas. The first area regards case-study specific teleconferences that will be organised at specific milestones, where special reference groups, consisting of sub-sets of the stakeholders will participate. These groups will either be members of the national stakeholder groups of the case study, or members from other countries' stakeholder groups, having experience on aspects addressed by the case study. The second area refers to fora with the participation of the wider group of the project stakeholders that will be organised at milestones of the project.

3.3.6 Participation at External Conferences/Workshops

As already discussed in section 3.2.11, the partners are invited to submit scientific papers to international, European or national conferences and workshops. This will help to provide for the widest possible dissemination of the project's results, among the academic and research communities, and also the general public. The procedure that will be followed to approve attendance was presented in section 3.2.11.

A table of forthcoming conferences is presented in Table 6. The list of conferences will be updated throughout the lifecycle of the project, through the "interactive agenda" of forthcoming events and activities of the website.

Table 6: List of international conferences

Conferences	Place	Dates	Deadlines for abstract or full paper submission
GIS Ostrava 2013 - Geoinformatics for City Transformations	Ostrava, Czech Republic	21.01.2013	October 12 2012 full paper
2nd International Conference on Traffic and Transportation Engineering (ICTTE 2013)	Malé, Maldives	02.02.2013	October 15-2012 full paper
The International Conference on Tourism, Transport, and Logistics	Paris, France	14.02.2013	November 30 2012
Turkish National Public Transport Conference 'Fare Management: Policies, Regulation, Structure and Operation'	Izmir, Turkey	21-22.02.2013	Organized by UITP
Sustainable mobility in austerity times: Unlock growth opportunities for your city!	Nantes, France	10-12.03.2013	Organized by UITP
Asia Pacific Rail 2013	Hong Kong, China	12.03.2013	No call stakeholder conference
2013 Global Information and Management Symposium (GIAMS)	Bangkok,	15.04.2013	Full paper/abstract December 15 2012
ENERGY & ENVIRONMENT: bringing together Economics and Engineering	Knoxville, Tennessee	09.05.2013	Full paper December 29 2012
19th International Conference on Urban Transport and the Environment	Kos, Greece	29 – 31.05.2013	Abstract as “soon as possible”
Velo-city 2013 Vienna. The Sound of Cycling - Urban Cycling Cultures	Vienna, Austria	11.06.2013	Abstract October 22 2012
International RILEM Symposium on Multi-Scale Modeling and Characterization of Infrastructure Materials	Stockholm, Sweden	12.06.2013	Draft paper November 1 st 2012
LTA-UITP Singapore International transport Congress and Exhibition (SITCE 2013)	Singapore – Singapore Asia	07-10.10.2013	Abstract 15 December 2012
European Transport Conference (Annual)	Frankfurt, Germany	October 2013	2013
TRB 93rd Annual Meeting	Washington, D.C.	12-16.01.2014	Full paper by August 1 2013
Transport Research Arena	Paris, France	2014	2013

3.3.7 Final Conference

A City-HUB final conference will be organised in month 29 (January 2015) for the presentation of the outcomes of the project. Invitees will include the European Commission and international and European organisations with interest in the project. The results of the implementation of the project's innovative solutions in urban transport for each case study that will be investigated during the project will be presented.

3.3.8 Cooperation and synergies with other projects

Cooperation between City-HUB and other relevant research projects that run during the same period will be pursued. The project coordinator will be responsible for establishing initial contact with coordinators from other projects, and efforts will be made for the development of potential synergies. In terms of dissemination, the WP8 Leader will be responsible for investigating possible common activities, and will, also, inform the other consortia about the progress of City-HUB, by sending them the yearly newsletter and other relevant dissemination materials. All relevant contacts from other consortia will be added to the stakeholder database developed as part of WP7. A list of related European projects, separated into on-going and completed, is presented in Table 7. Links to these projects will be provided under the “Links” section of the City-HUB website, while the WP8 Leader will request the link of the City-HUB website to be included in the websites of these other projects.

Table 7: List of related European ongoing and completed projects

Project acronym	Project title	Project coordinator
Ongoing projects		
NODES	New tools for design and operation of urban transport interchanges	Caroline Hoogendoorn Phone: +32 2 788 01 11 Email: caroline.hoogendoorn@uitp.org UITP, International Association of Public Transport, European Union
STRAIGHTSOL	Strategies and measures for smarter urban freight solutions	Jardar Andersen Phone: +47 99 70 08 04 Email: Jardar.Andersen@toi.no Institute of Transport Economics, Oslo, Norway
CLOSER	Connecting long and short distance networks for efficient transport	Ingrid Nagel Phone: +49 351 4640-695 Email: ingrid.nagel@ivi.fraunhofer.de Fraunhofer Institut für Verkehrs- und Infrastruktursysteme IVI, Dresden, Germany
DECOMOBIL	Support action to contribute to the preparation of future community research programme in user centred design for eco-multimodal mobility	Lucile Mendoza Phone: +33 4 72 14 23 15 Email: lucile.mendoza@humanist-vce.eu 69675 BRON cedex France
VIAJEO	International demonstrations of platform for transport planning and travel information	ERTICO-ITS Europe The Blue Tower 2nd floor Avenue Louise, 326 B-1050 Brussels Belgium
CIVITAS	City-vitality-sustainability, or cleaner and better transport in cities	Secretariat Csaba MEZEI Phone: +36 26 504 046 Email: secretariat@civitas.eu The Regional Environmental Center for Central and Eastern Europe (REC) Ady Endre út 9-11 2000 Szentendre Hungary
NAVIKI	Energy efficiency through Web 2.0 bicycle navigation and communication	Fachhochschule Münster – University of Applied Sciences Email: naviki@naviki.org Soester Straße 13 48155 Münster (Germany)
ISEMOA	Improving seamless energy-efficient mobility chains for all	Michaela Kargl Phone: +43 316 810451 15 Forschungsgesellschaft Mobilität – Austrian Mobility Research FGM-AMOR Schönaugasse 8a, 8010 Graz, Austria

Project acronym	Project title	Project coordinator
Completed projects		
HERMES	High efficient and reliable arrangements for crossmodal transport	Prof. Rosário Macário Phone: +351 218 418 413 Email: rosariomacario@civil.ist.utl.pt Department of Civil Engineering and Architecture, Instituto Superior Técnico, Lisbon, Portugal
INTERCONNECT	Interconnection between short and long-distance transport networks	Christiane Bielefeldt Phone: +44 (0) 131 455 2951 Email: christiane.bielefeldt@gmail.com Edinburgh Napier University, Merchiston Campus, Edinburgh EH10 5DT, United Kingdom
CONDUITS	Coordination of network descriptors for urban Intelligent transport systems	Maurizio Tomassini Phone: +39 06.3212655 Email: mtomassini@isis-it.com Istituto di Studi per l'Integrazione dei Sistemi – ISIS Rome, Italy
DELTA	Concerted coordination for the promotion of efficient multimodal interfaces	Yannis Tyrinopoulos Phone: +30 2310498267 Email: ytyrin@certh.gr CERTH/HIT 6th km, Charilaou - Thermi Road, P.O. Box 361, 57001 Thermi, Thessaloniki, Greece
KITE	A knowledge base for intermodal passenger travel in Europe	STRATA GmbH Phone: +49 700 22557872 Email: kite@strata-gmbh.de Karlsruhe, Germany
COMPASS	Better connections in European passenger Transport	Christiane Bielefeldt Phone: +44 (0) 131 455 2951 Email: christiane.bielefeldt@gmail.com Edinburgh Napier University, Merchiston Campus, Edinburgh EH10 5DT, United Kingdom
TOOLQIT	Tools for the assessment of level and quality of service across different transport marker segments	Prof. Rosário Macário Phone: +351 218 418 413 Email: rosariomacario@civil.ist.utl.pt Department of Civil Engineering and Architecture, Instituto Superior Técnico, Lisbon, Portugal
CityNetMobil	City network for fair mobility	Adriano Alessandrini Università degli Studi di Roma "La Sapienza" Italy

4 Foreground and exploitation

4.1 Management of foreground and intellectual property rights

The protection and exploitation of the project's Foreground is formulated in EC-GA Article II.26 – Article II-29, and the terms have been agreed by the consortium in Section 8 of the City-HUB Consortium Agreement, regarding the joint ownership (paragraph 8.1) and the transfer of Foreground (paragraph 8.2).

Regarding intellectual property rights, a three-level approach has been agreed. More specifically, the existing knowledge and know-how of the involved partners that may be used by the consortium for the needs of City-HUB will remain the property of the partner-owner. As far as the knowledge and know-how that will be developed throughout the project's lifetime is concerned, it is agreed that this type of property, will be available to all partners participating in the project. Any additional knowledge developed within the project will be part of the demonstrators' (case studies) property and will be permitted for use by the consortium under specific terms and conditions of transfer and use. Lastly, the case of publications at journals and conferences' proceedings is addressed in paragraph 3.2.11, in which the process of publications is analytically presented.

4.2 Exploitable outcomes

Focusing on exploitation of the project's outcomes, each partner will be responsible for assessing whether the results of any WP are capable of being exploited, and will notify the WP8 Leader. All terms and conditions referred above the protection of the Foreground have to be considered.

An indicative list of potential exploitation opportunities that may arise during the project is presented in Table 8. In addition, for each exploitation opportunity/outcome, the impact and added value, as well as the potential beneficiaries and benefits are given in Table 9.

Table 8: Indicative list of potential exploitation opportunities

EXPOloitable Outcomes (EXPOs)	Responsible partner(s) / WP(s)	Timing	Documentation format
EXPO1: State-of-the-art review (theory and practice)	Panteia/NEA / WP2	M8	Report
EXPO2: Identification and testing of key intermodality factors as input to City-HUB model	Panteia/NEA; CERTH / WP2	M8	Report
EXPO3: Guides for efficient and smart design and integrated management	TRL / WP3; VTT / WP4	M16	Guidebook
EXPO4: Guidelines to achieve an integrated City-HUB model	UPM / WP5	M26	Guidebook
EXPO5: City-HUB Handbook	UPM / WP5; TOI / WP6	M30	Handbook
EXPO6: Case-validated solutions for transport interchanges	TOI / WP6	M30	Report
EXPO7: Summary report on the transport visioning events at the stakeholders workshops	KTI / WP7	M15	Report

Table 9: Exploitable outcomes

EXPOloitable Outcomes (EXPOs)	Impact / added value	Potential beneficiaries and benefits
EXPO1: State-of-the-art review (theory and practice)	Overview of the key results from theory and practice to understand success of interchanges.	Better understanding of operation, management and design interchanges to operators and policy makers. Research community may benefit from the state-of-the-art review.
EXPO2: Identification and testing of key intermodality factors as input to City-HUB model	Determination of key success factors.	Understanding of key success factors which should be taken into account by operators and policy makers when developing interchanges.
EXPO3: Guides for efficient and smart design and integrated management	The future planning and operation of transport interchanges will be able to draw upon best practice from across Europe and be based upon sound principles from research into travel behavior (e.g. with improved techniques in design, assessment, demand modeling and transport appraisal.	Operators would improve efficiency of interchange, reducing costs and gaining increased patronage, and potentially greater income such as retail. Policy makers gain a better understanding of how to maximise value of public investment in transport (e.g. through improved modeling and appraisal techniques). Public benefit from improved interchange facilities that reduce the penalty of interchange, through time savings and better journey time predictability, improved comfort and security, being able to use waiting time productively.

EXPOitable Outcomes (EXPOs)	Impact / added value	Potential beneficiaries and benefits
<p>EXPO4: Guidelines to achieve an integrated City-HUB model</p>	<p>In collaboration with the end users, these guidelines will allow to set up and deploy new innovation domains. They will help to improve and optimize (and even make resilient) the City-HUB operation on other initiatives in the future.</p> <p>These guidelines will be developed through a set of European case studies selected.</p>	<p>Guidelines and Handbook will provide the European transport decision-makers with model guidelines to implement policies, strategies and methods to provide end-users with more accessible transport.</p> <p>They will help to reduce operating costs and management for the system operator, to reduce the waiting time for passengers to transfer from one mode to another and to increase of knowledge on the innovative approaches as regards the design or new or the upgrade of existing for research communities.</p>
<p>EXPO5: City-HUB Handbook</p>	<p>The main goal of City-HUB Handbook is to collect all experiences and findings from guidelines in order to disseminate throughout Europe.</p>	<p>Guidelines and Handbook will provide the European transport decision-makers with model guidelines to implement policies, strategies and methods to provide end-users with more accessible transport.</p> <p>They will help to reduce operating costs and management for the system operator, to reduce the waiting time for passengers to transfer from one mode to another and to increase of knowledge on the innovative approaches as regards the design or new or the upgrade of existing for research communities.</p>
<p>EXPO6: Case-validated solutions for transport interchanges</p>	<p>Validation of the City-HUB model potential impact on real-world cases.</p>	<p>Operators: Guidelines from information provision, management and business models for operation of interfaces.</p> <p>Policy makers and influencers: Innovative approaches to design of interfaces and strategies for further integration of land use and passenger infrastructure planning.</p> <p>Academic and research communities, general public: Information on improvement potential in urban transport.</p>
<p>EXPO7: Summary report on the transport visioning events at the stakeholders workshops</p>	<p>The report will highlight stakeholders expectations concerning terminal design in four key but often neglected areas (smart design, ICT and information, accessibility, soft mode integration).</p>	<p>Operators: Feedback is received from users about existing or planned solutions.</p> <p>Policy makers and influencers: Feedback from stakeholders can influence the decision-making process (e.g.. new decision criteria introduced).</p> <p>Academic and research communities, and planning and design companies: New previously neglected areas of design and planning may be explored through feedback from stakeholders and users.</p>

5 Impact monitoring system

In order to assess the impact of the project and specifically its dissemination strategy, a methodology has been developed and specific measurement variables will be monitored during (and after) the project implementation. Three variables will be measured and evaluated, these being:

- Visits to and downloads from the website
- Number of participants at project's events
- Number of publications

5.1 Visits and downloads in the website

The system supporting the City-HUB website will automatically log and collect statistical data, regarding the visitors of the website (excluding any personal information). In addition, the “hits” of the visitors on specific webpages of the website and the “downloads” of specific reports (e.g. deliverables, etc.) will be recorded, allowing the dissemination leaders to understand the interests of the visitors of the website and consider any modifications that may be needed.

5.2 Number of participants at project's events

The number and profile of the participants at each event of the project (e.g. workshop, transport visioning event, etc.) will be recorded by the responsible for the organisation in each case partner, in order to monitor the impact of the project throughout its lifetime. The WP Leader will assess the data and propose solutions if needed, e.g. if the number of the participants at an event is significantly lower than the expected.

5.3 Number of publications

The relevant task leader will ensure the accurate recording of the publications in scientific journals and the presentation at conferences.

6 Summary of dissemination tasks/activities and timetable

A summary of the dissemination tasks and the relevant activities that will take place during the project is presented in Table 10. In addition, Table 11 shows the timetable of these activities (No.1-34 as these presented in table 10) throughout the duration of the project (30 months, from September 2012 to February 2015). The potential exploitable outcomes (EXPOs) of the project (Table 8) are also added in the timetable.

Table 10: Dissemination tasks/activities list

No.	Task / activity	Responsible partner(s)	Time/location
1	Development of the City-HUB website	CERTH	M3
2	Development of stakeholder database	KTI All	M4
3	1 st press release (part of D8.3)	CERTH: English version, All: local language	M3
4	Production of project presentation (part of D8.3)	CERTH	M3
5	Initial contact with coordinators of other relevant projects	UPM	M3
6	Social networking	CERTH	M3
7	Production of project leaflet (part of D8.3)	CERTH All	M6
8	Production of 1 st newsletter (part of D8.3)	CERTH All	early M6, before the 1 st stakeholder workshop
9	Production of project poster (part of D8.3)	CERTH All	early M6, before the 1 st stakeholder workshop
10	2 nd press release (part of D8.3)	CERTH, KTI: English version, All: local language	early M6, before the 1 st stakeholder workshop
11	1 st stakeholder workshop/conference	KTI for the organization, CERTH for the dissemination, Panteia/NEA for D2.1	early M6, Budapest
12	Transport vision events	KTI for the organization, CERTH for the dissemination	early M6, Budapest
13	Special event 1	KTI	early M6, Budapest
14	3 rd press release (part of D8.3)	CERTH: English version, All: local language	late M6, after the 1 st stakeholders' workshop
15	Production of fact sheets regarding the topics of the transport vision event (part of D8.4)	CERTH, KTI	M7
16	Production of fact sheets regarding pilot studies (part of D8.4)	CERTH, UPM, TRL, VTT, KTI	M11
17	4 th press release (part of D8.5)	CERTH: English version, All: local language	early M14, before the 2 nd stakeholder workshop

Note: M1 refers to September 2012, thus the beginning of the project.

No.	Task	Responsible partner(s)	Time/location
18	2 nd stakeholder workshop/conference	KTI for the organisation VTT for the local organisation CERTH for dissemination TRL as WP3 Leader VTT as WP4 Leader	mid M14/Helsinki
19	Special event 2	KTI	mid M14, Helsinki
20	5 th press release (part of D8.5)	CERTH: English version, All: local language	late M14, after the 2 nd stakeholder workshop
21	Production of 2 nd newsletter (part of D8.5)	CERTH Input will be required from all partners	M18
22	Report on conference presentations and publications I (to be included in the Interim Report)	IFSTTAR, CERTH	M18
23	Production of dissemination material IV (D8.6)	CERTH	M24
24	6 th Press release (part of D8.7)	CERTH, KTI: English version, All: local language	M26, before the 3 rd stakeholder workshop
25	Production of dissemination material IV (D8.6)	CERTH	M24
26	3 rd stakeholder workshop/conference	KTI for organisation Local partner for local organisation CERTH for dissemination UPM as WP5 Leader	M26
27	Special event 3	KTI	M26
28	7 th press release (part of D8.7)	CERTH: English version, All: local language	M26, after the 3 rd stakeholder workshop
29	Production of 3 rd Newsletter	CERTH Input will be required from all partners	M29, before the final conference
30	8 th Press release (part of D8.7)	CERTH: English version, All: local language	M29, before the final conference
31	City-HUB final conference	CERTH, KTI	M29/to be decided
32	9 th press release (part of D8.7)	CERTH: English version, All: local language	M29, after the final conference
33	Report on conference presentations and publications II (to be included in the final report)	IFSTTAR, CERTH	M30
34	Production of fact sheets regarding the demonstration studies (part of D8.7)	UPM, CDV, Panteia/NEA, IFSTTAR, TOI, KTI	M30

Note: M1 refers to September 2012, thus the beginning of the project.

Table 11: Timetable of dissemination tasks/activities and exploitable results

	1	2	3	4	5	6	7	8	9	10	11	12	13	14	15	16	17	18	19	20	21	22	23	24	25	26	27	28	29	30
WP1			5																											
WP2								EXPO1 EXPO2																						
Task 2.1																														
Task 2.2																														
Task 2.3					11																									
Task 2.4																														
WP3																EXPO3														
WP4																EXPO3														
WP5																										EXPO4				
WP6																														EXPO5 EXPO6
Task 6.1																														
Task 6.2																														
WP7															EXPO7															
Task 7.1			2																											
Task 7.2																														
Task 7.3						12 13								18 19												26 27				
Task 7.4																														
WP8																														
Task 8.1																														
Task 8.2			1 6																											
Task 8.3																														
Task 8.4																				22										33
Task 8.5			3 4			7, 8, 9, 10, 14, 15					16			17 20						21					23 25		24 28			29 30 32
Task 8.6																													31	

7 Literature

1. Giovanni Carrada, 2006. Communicating Science: A scientist's survival kit. Luxembourg: Office for Official Publications of the European Communities, 2006. ISBN: 92-79-01947-3.
2. European Commission, Directorate – General for Research, Socio-economic Sciences and Humanities, 2010. Communicating research for evidence-based policy making: A practical guide for researchers in socio-economic sciences and humanities. Luxembourg: Publications Office of the European Union, 2010. ISBN: 978-98-79-14858-3, ISSN: 1018-5593, doi: 10.2777/9276.
3. European Commission, Community Research, 2004. European research, A guide to successful communications. Luxembourg: Office for Official Publications of the European Communities, 2004. ISBN: 92-894-7882-9.

8 Annexes

Annex A: Indicative list of potential users

Annex B: List of dissemination activities

Annex C: List of publications

Annex d: Form of intent for submission of papers

Annex A: Indicative list of potential users

Table 12: Indicative list of potential users

Users Partner/ country	Transport & terminal operators	Transport policy makers and influencers	Academic and research communities	General public/demand side users
UPM / Spain	<p>ALSA (Transport Operator)</p> <p>Consortio Regional de Transportes de Madrid</p>	<p>Head of Mobility of Barcelona Transport</p> <p>ATM Barcelona (Transport Authority)</p> <p>Mobility Department (Regional Government of Galicia)</p> <p>Agence d'Urbanisme Bordeaux métropole Aquitaine (Urban Planning Authority)</p> <p>European Metropolitan Transport Authorities (EMTA)</p> <p>CIVINET (Civitas Spain and Portugal Network)</p> <p>Federación Española de Municipios y Provincias</p>	<p>ECTRI (European Conference of Transport Research Institutes)</p> <p>Universitat Politecnica de Catalunya. CENIT-Centre d'Innovació del Transport</p> <p>Universidad de Cantabria</p>	<p>CCOO – Departamento de Movilidad</p>
KTI / Hungary	<p>Volánbusz, regional bus operator</p> <p>BKV, public transport operator Budapest</p> <p>MÁV Zrt. (Hungarian National Railways – infrastructure owner)</p> <p>MÁV-Start Zrt. (Passenger train operator)</p> <p>Volán Egyesülés (Association of bus companies)</p>	<p>Ministry of National Development (legislation)</p> <p>Centre for Budapest Transport (transport policy for Budapest)</p> <p>National Development Agency (EU funds)</p> <p>Municipality of Budapest</p> <p>Municipalities of Debrecen, Miskolc, Szeged, Pécs, Győr, Székesfehérvár</p>	<p>Technical University, Budapest</p> <p>Széchenyi University, Győr</p> <p>FŐMTERV Zrt. (planner)</p> <p>Közlekedés Kft. (planner)</p> <p>Uvaterv Zrt. (planner)</p> <p>Városkutatás Kft. (planner)</p> <p>Pro Urbe Kft. (planner)</p>	<p>VEKE (Association for urban and suburban transport) (public transport user NGO)</p> <p>MEOSZ (Association of disabled persons' organizations)</p> <p>MVGyOSZ (Association of the blind)</p>
TOI / Norway	<p>RUTER</p> <p>Vaterland Bus Terminal</p> <p>Lillestrom Bus Terminal</p>	<p>The Norwegian Public Road Administration</p> <p>Akershus County Council</p> <p>Ministry of Transport and Communication</p>	<p>Molde University College</p> <p>Institute of Transport Economics</p> <p>SINTEF Technology and Society</p>	
CERTH / Greece	<p>Organization of Urban Transportation of Thessaloniki (OASTH)</p> <p>Hellenic Railways Organisation (OSE) – Trainose</p>	<p>Ministry of Infrastructure, Transport and Networks</p> <p>Thessaloniki's Integrated Transport Authority</p>	<p>Aristotle University of Thessaloniki</p> <p>Department of Transportation Planning and Engineering, National Technical University Athens, Greece</p> <p>Transportation Engineering Laboratory, University of Thessaly, Greece</p> <p>Hellenic Institute of Transportation Engineers</p>	<p>EPIVATIS,; Citizens' network for public transport and sustainable mobility</p> <p>Cyclists of Thessaloniki (www.podilates-thess.gr)</p>

Users Partner/ country	Transport & terminal operators	Transport policy makers and influencers	Academic and research communities, planning and design companies	General public/demand side users
Panteia/NEA / The Netherlands	Dutch Railways (NS, owner of Centraal Station Utrecht) ProRail (rail infrastructure operator) QBuzz (bus operator) Connexion (current bus operator Utrecht) Arriva (bus operator)	Bestuur Regio Utrecht (regional government)	VU University Amsterdam, Faculty of Economics and Business Administration, Transport Economics Technical University Delft, Department of Transport Policy and management	Rocov Utrecht (regional platform for public transport travellers)
TRL / United Kingdom	London Underground Network Rail (responsibilities are changing following restructuring and devolution to regional management) Transport for London TfL Association of Train Operating Companies (ATOC) - Integrated Transport Manager Individual Train Operating Companies	DfT, TfL, Network Rai as for operatorsl	RSSB	Passenger Focus
VTT / Finland	Helsinki Regional Transport Authority City of Helsinki, Transportation and Traffic Planning Division City of Tampere City of Turku City of Oulu	The Finnish Transport Agency The Centres for Economic Development, Transport and the Environment	Aalto University, School of Engineering, Department of Civil and Environmental Engineering, Transportation Engineering Tampere University of Technology Transport Research Centre Verne	
IFSTTAR / France	EURALILLE (Lille Flandres & Lille Europe stations)	Lille Metropole Urban Community GART Groupement des Autorités Responsables de Transport - French Transport Authorities Groupment UTP Union des Transports Publics et Ferroviaires -Public transport and rail transport Nord Pas de Calais (regional council)		
CDV / Czech Republic	Dopravní podnik hl.m.Prahy (Prague Transport) Association of Urban Transport Operators	City of Prague Council District Council Praha 6	CVUT (Czech Technical University) - Transport Faculty CZU (Czech University of Agriculture)	

Annex B: List of dissemination users

Table 13: List of dissemination activities

[to be filled in by partners as project progresses]

No.	Type of activity	Main Leader	Title	Date/period	Place	Type of audience	Size of audience	Countries addressed

Annex C: List of publications

Table 14: List of publications

[to be filled in by partners as project progresses]

No.	Title	Authors	Title of the periodical or the series	Number, date or frequency	Publisher	Place of publication	Year of publication	Relevant pages	Permanent identifiers (e.g.. link, if available)	Is/Will open access provided to this publication?

Form of intent for submission of papers

Table 15: Form of intent for submission of papers

Title of the paper	
<p>The names of the authors-participants in City-HUB and the names of other authors outside the consortium (if any)</p>	
<p>The name of the Institute-partner of City-HUB and the names of other institutes/organisations outside the consortium (in any)</p>	
<p>The name of the journal or conference that the authors intend to submit or present a paper, respectively, and the place and timing, in case of conferences</p>	
<p>Abstract</p>	